

本图册所示产品，以实物为准，不排除外观与性能变更或改进的可能性，本公司拥有最终解释权。
This book shows the product, in order to prevail in kind, do not rule out the possibility of the appearance and performance of change or improvement, the company has the right of final interpretation.



青岛汇才机械制造有限公司

Qingdao **Huicai** Machine Manufacture Co., Ltd

国家**AAA**级信用企业

National **AAA** Grade Credit Enterprise

青岛汇才机械制造有限公司

地址：山东青岛胶南市黄山经济区安康路167号
公司电话：0532-83123288 83123988
国际贸易一部：0532-86899868
国际贸易二部：0532-83978175
邮箱：qdc681126@163.com qdhuicai@163.com
网址：www.qdhuicai.com www.huicaiglobal.com
邮编：266424
传真：0532-83123878 83121078
传真：0532-86899868
传真：0532-83978175

Qingdao Huicai Machinery Manufacturing Co., Ltd.

Address: No. 167, No., Mount Huangshan Economic Zone, Qingdao, Shandong, Jiaonan
Company Tel: 0532-83123288 83123988
International Trade: 0532-86899868
Two international trade: 0532-83978175
Mailbox: qdhuicai@163.com qdc681126@163.com
URL: www.huicaiglobal.com www.qdhuicai.com
Zip code: 266424
Fax: 0532-83123878 83121078
Fax: 0532-86899868
Fax: 0532-83978175

中国·青岛

目录

公司简介	2
企业文化	3
资质荣誉	4
捏炼机	5
单刀液压切胶机	7
提升机	8
开放式炼胶机系列	9
冷喂料挤出机	10
胶片冷却线	11
普通柱式硫化机	12
下压式平板硫化机系列	13
普通框式硫化机	14
鄂式平板硫化机	15
输送带等大型硫化机	16
挡边带硫化机	17
自推磨平板硫化机	18
真空液压成型机	19
卧式橡胶注射成型机	20
立式橡胶注压成型机	21
内胎双层硫化机	22
全自动内胎硫化机	23
液压轮胎硫化机	24
自行车/电动车外胎成型机	25
胶带硫化接头机	26
三辊压延机	27
四辊压延机	29
橡胶输送带压延机	31
橡胶输送带恒张力成型线	33
热喂料挤出机	34
销钉冷喂料挤出机	35
双螺杆挤出压机	36
输送带平板硫化生产线	38
搅拌机	39
模具	40
高倍率橡胶发泡成型机	41
客户照片	43

公司简介 Company Profile



青岛汇才机械制造有限公司创建于1996年10月，以生产各种规格整套织物芯与钢丝绳芯输送带生产线、平板系列硫化机、开放式炼胶机等橡胶机械与轮胎机械为主的专业性制造厂家。经过十几年的探索与创新，发展由独立的研发、加工、检测、组装、售后服务于一体的质量管理保证体系。公司始终坚持以技术创新为依托，以市场为导向。凭借雄厚的技术力量、先进的创新制造工艺、完善的检测手段和一流的售后服务，使制造出的平板系列硫化机、开放式炼胶机等产品在同行业中享有较高的声誉，畅销全国各地。公司拥有自营进出口权，产品远销美国、韩国、泰国、俄罗斯、斯里兰卡、智利等国家和地区。并先后被授予“全国AAA级信用企业”“青岛市诚信企业”称号。

公司始终坚持以人为本、科学发展、与时俱进、自主创新的时代理念；质量求生存、信誉求发展、真诚求实、互利共赢的经营理念；竭诚欢迎国内外客商来公司洽谈指导，携手发展，共创辉煌。诚邀有志之士加盟汇才，共建伟业。天道酬勤，厚德载物是汇才人永恒的追求！

企业文化

CORPORATE CULTURE

保持一流的质量，使我们的承诺。无论是质量、技术还是优质的服务，都力求做到臻善完美。用比业界更挑剔的眼光来衡量自己的产品。以不断的深邃求远，高度重视产品的质量，严格把控每一处细节标准，力求做到精益求精。对每台机械质量的重视和对精品的执着追求，我们一直用真实的行动，兑现承诺，超越梦想！以诚信为本铸就梦想与辉煌。



资质与荣誉

Qualification & Honors



Dispersion Kneader (Banbuary) 捏炼机

产品特点/Features

1. 塑胶物料在密封、加压及温度可控条件下混炼或塑炼，生产效率高，品质优良稳定。
3. 与物料接触的所有零部件表面均经过打磨镀铬后抛光、耐磨与防腐。
6. 电控系统采用可编程控制器（PLC）具有完善可靠的控制空能与检测报警功能及必要的安全连锁保护功能，并提供联网的串行接口。

Features

1. The plastics material has high production efficiency, good quality and stability while it's mixing or refining in the condition with sealing, pressure and temperature under controlled.
3. All parts in contact with the material surface are polished after plating hard chrome polishing, wear and corrosion resistance.
6. The electric control system adopts programmable logic controller (PLC) to improve the reliability of the control of air and space can detect alarm function and the necessary safety interlock protection function, and can provide the serial interface.

设备零部件图片



勇于创新 · 精益求精
KEEP INNOVATING AND IMPROVING

性能参数列表

技术参数 Technical Date								
产品型号 Type	X(S)N-3X32	X(S)N-10X32	X(S)N-20X32	X(S)N-35X30	X(S)N-55X30	X(S)N-75X30	X(S)N-110X30	X(S)N-150X30
捏炼总容积(L) Total Volume of Kneading Chamber	8	25	45	75	125	180	250	325
密炼总容积(L) Total Volume of Mixing Chamber	3	10	20	35	55	75	110	150
主驱动电机功率 (kw) Driving Motor Power	5.5	15	30	55	75	110	185	220
翻转电机功率 (kw) Tipping Motor Power	0.55	1.1	1.5	2.2	3.0	4.0	5.5	5.5
翻转角度 Tipping Angle	135°	140°	140°	140°	140°	140°	140°	140°
转子轴转速 (前/后) (r/min)	0-60,32/ 24.5	30/23.5	30/25	30/24.5	30/24.5	30/24.5	30/24.5	30/24.5
压缩空气工作压力 (Mpa) Flow Rate of Compressed Air	0.5-0.8	0.5-0.8	0.5-0.8	0.5-0.8	0.6-0.8	0.6-0.8	0.6-0.8	0.6-0.8
压缩空气流量 (m3/min) Flow Rate of Compressed Air	≥0.3	≥0.5	≥0.7	≥0.9	≥1.0	≥1.0	≥1.5	≥1.5
冷却水压力 (炼胶) (Mpa) Pressure of Cooling Water	0.2-0.4	0.2-0.4	0.2-0.4	0.3-0.4	0.3-0.4	0.3-0.4	0.3-0.4	0.3-0.4
加热蒸汽压力 (炼塑) (Mpa) Pressure of Heated Steam	0.5-0.8	0.5-0.8	0.5-0.8	0.5-0.8	0.5-0.8	0.5-0.8	0.5-0.8	0.5-0.8
外形尺寸(mm) Overall Dimensions (L*W*H)	1660*960 *1750	2580*1300 *2280	2630*1520 *2550	3200*1900 *2945	3360*1950 *3050	3760*2143 *3155	4075*2712 *3580	4200*3200 *4000
重量(kg) Weight	2000	3300	4500	6500	7200	10000	14500	19500

Rubber Cutter 单刀液压切胶机

产品特点/Features

本机主要用于把天然橡胶，合成橡胶块切成便于塑炼的小胶块。

Features

This machine is mainly used for cutting the natural rubber, synthetic rubber into pieces for the refining of small plastic.



性能参数列表

技术参数 Technical Date			
产品型号 Type	XQL-80	XQL-120	XQL-12
切胶刀宽度 (mm) Width of Knife For Cutting Plastic	660	760	760
切胶刀行程 (mm) Knife Stroke	680	680	680
油缸总压力 (KN) Cylinder Total Pressure Approximately	80	120	125
切胶行程时间 (s) Stroke Time	14-16	13-16	13-16
电机功率 (kw) Motor Power	5.5	11	14
外形尺寸 (mm) (L*W*H) Overall Size	2122*1440*2509	1950*1400*2338	2300*1500*2530
重量 (kg) Weight	1600	2000	2600

Hoisting Machine 提升机

设备零部件图片



性能参数列表

产品型号 Type	TSJ-35L、55L	TSJ-75L、110L
电机功率 Motor power	1.5kw	2.2kw
电机型号 Motor type	Y90L-4	Y100L1-4
摆线针轮减速机 Indle wheel swinging reducer	XWD1.5-5	XWD2.2-4
理论提升时间 Theory hoisting time	About 20s	About 24s
外形尺寸 Size (L*W*H)	3160x550x1700mm	3620x750x1950mm

Rubber Mixing Mill 开放式炼胶机系列

设备零部件图片

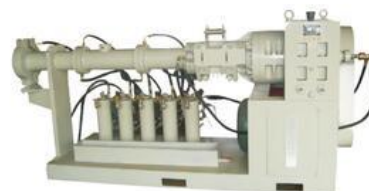


性能参数列表

技术参数/Technical data					
产品型号Type	XK-250	XKL-400	XK-450	XK-560C	XK-560
辊筒直径 Roller diameter(mm)	250	400	450	560前S10后	560前S10后
辊筒长度Roller length(mm)	620	1000	1200	1530	1530
前辊线速度 Working Linear speed of front roll(m/min)	15.1	18.65	24.5	27.87	27.7
前后辊筒速比 Friction ratio of front roller (m/min)	1 : 1.1	1 : 1.27	1 : 1.27	1 : 1.2	1 : 1.2
生产能力 capacity (kg/h)	10-15	18-35	25-50	50-60	50-65
功率 power (kw)	18.5	37	55	90	90
外形尺寸overall size (mm)	3400*1350*1500	4250*1850*1870	5200*2380*1770	6220*2284*2045	6120*2300*2000
重量 weight(kg)	3500	12800	20000	21600	22000
备注 Note 尼龙瓦为干油润滑，铜瓦和轴承为稀油润滑Nylon bush grease LUB, copper and bearing bush oil LUB.					

Cold Feed Rubber Extruder 冷喂料挤出机

设备零部件图片



产品特点/Features

1. Without warm-up mill for the extruder, so investment and production cost can be reduced.
挤出机不需要预热开炼机，减少投资和生产成本
2. Rubber materials with stationary temperature and viscosity can be fed continuously, so high precision and homogeneity.
稳定的物料温度和粘度可以持续喂料，高精度和均匀性
3. Mounting the extruder has nothing to do with the compound-preparation workshop, more suitable for the company without a mixing workshop.
挤出机安装于炼胶准备车间无关，更适合没有炼胶车间的公司
4. More uses, the extrusion head or screw can be changed to extrude different kinds of rubber products.
更多用途，挤出机头货螺杆可更换，用来挤出不同种类的橡胶产品

参数性能列表

Type型号	XJW-90	XJW-120	XJW-150
Screw Dia.(mm)螺杆直径	90	120	150
Max. Screw Speed (r/min) 最大螺杆速度	45	40	35
Feeding Roll Dia. (mm) 喂料辊直径	72	120	120
Motor Model & Power 电机型号及功率	Motor Z4, the power will be decided according to the extrusion head equipped.Z4电机，功率视装配的挤出机头而定		
Zone of Hot Water Circulating热水循环区	3-4	3-4	3-4
Max. Total Power of Hot Water Circulation Heating (KW)热水循环加热最大功率	48	48	48
Capacity (Kg/h)产量	It will be decided according to the extrusion head equipped. 视装配的挤出机头而定		
Overall Dimensions(mm) (Without extrusion head and hopper) 外部尺寸 (不包括挤出机头和料斗)	3045x2052x1453	4250x2290x1490	4277x2211x1503
Weight (Kg)重量	5000	5500	8000

Batch-off Cooler 胶片冷却线

产品特点/Features

1. 胶片冷却线主要用于从开炼机或者双螺杆挤出机出料后的胶片、胶条冷却。
2. 配有自动橡胶收集，自动切割装置。具有高自动化，可实现无人操作。

Features

1. The batch cooler is used for cooling, folding and depositing the rubber strip that comes from the open mills or twin screw extruder.
 2. Auto rubber collecting device; Auto cutter device; It has high automatization and can realize unattended operation.
- Technical parameter of XGJ-600 Batch-off Cooler

设备零部件图片



性能参数列表

名称 Name	技术参数 Technical Parameter
适应胶片规格 Applicable rubber specification	600mm
胶片冷却温度 Rubber cooling temperature	380V/50HZ
胶片前接取速度 Front picking speed of rubber	35M/MIN
胶片冷却输送速度 Cooling conveying speed of rubber	1.37M/MIN
轴流风扇 Axial fan	KXT40-E4 0.37KW 12台
接取装置减速机 Picker reducer	XWD 1.5-4-1/23
提升装置减速机 Lifter reducer	XWD 1.5-3-1/11
后接取减速机 Rear picking reducer	XWD 1.5-3-1/11
全线的长度 Total length	-11m

Semi and Automatic Press vulcanizer (column) 普通柱式硫化机

用途

本机属小型平板系列硫化机、主要用于橡胶制品的硫化，一般采用立柱式结构，结构紧凑、造型美观，合模力大，每个工位上模板可加热180℃高温（可调），下模板可将温度控制在室温状态，形成有效温差；本机以其独特的双温工位结构和高压特性适应于各类反光材料制品如商标等的压制定形等。

There is small-sized and medium-sized plate press vulcanizer. This machine is generally adopted column and frame type, and it mainly used to produce various rubber products, such as solid tire, shoe sole, rubber tile, etc.

设备零件图片



性能参数列表

产品型号 Type	XLB-D(Y)350x350	400x400	500x500	600x600	700x700	800x800
公称合模力(N) Nominal molding power	0.25	0.5	0.6、0.8	1.00	1.00	1.60
工作层数 Working layer number	2	2	2	2	2/4	2
主电机功率 (KW) Main motor power	1.5	2.2	2.2	2.2	2.2	2.2
热板间距 (mm) Plate clearance	125-200	125-200	125-200	125-250	125-250	125-250
加热方式 Heating manner	电、(油)汽	电、(油)汽	电、(油)汽	Electricity (steam)	Electricity (steam)	Electricity (steam)
电加热功率 (电加热形式) Electric pipe heating power	1.8	2.7	3.0	2.7	5.4	4.8
尺寸 Size	1200*350*1300	1600*500*1480	1750*600*1540	1880*720*1680	2000*850*1750	1400*900*2400



Downward Plate Vulcanier Series (Pillar Structure) 下压式平板硫化机系列

Frame Type Vulcainzer Machine 普通框式硫化机

设备零部件图片



设备零部件图片



性能参数列表

产品型号Type	XLB-DQ800*800	XLB-DQ1000*1000
公称合模力(MN)Nominal molding power	2.00	3.50
热板规格 (mm) Plate size	800*800*70	1000*1000*70
工作层数Working layer number	2	2
热板间距 (mm) Plate clearance	600	750
柱塞行程 (mm) Piston stroke	500	550
液压系统压力 (Mpa) System pressure	16.0	17.7
热板单位面积压力 (Mpa) Plate pressure	3.15	3.50
主电机功率 (KW) Main motor power	11	11
热板间距 (mm)Plate chearantle	125-200	125-200

性能参数列表

产品型号 Type	1000x1000	1200*1200	1600x1600	1400x2600	2000*2000
公称合模力(MN) Nominal molding power	2.50	3.15	8.00	10.00	15.00
热板间距 (mm) Plate chearantle	400	400	400	400	400
加热方式 Calefaction manner	电、(油)汽 Electric/steam/oil	电、(油)汽 Electric/steam/oil	电、(油)汽 Electric/steam/oil	电、(油)汽 Electric/steam/oil	电、(油)汽 Electric/steam/oil
主电机功率 (KW) Main motor power	5.5	7.5	22.5	22.5	26

Jaw Type Flat vulcanizer 鄂式平板硫化机

产品特点/Features

本机属于鄂式平板硫化机，主要用于硫化三角带、履带等各种环形橡胶制品。

This machine is mainly used to vulcanizer V-belt, caterpillar etc. various kind of ring rubber products.

设备零件图片



性能参数列表

产品型号	XLE-Q400x200	XLE-Q400x400	XLE-Q400x600	XLE-Q400x1200	XLE-Q800x1100	XLE-Q1600x1500
公称合模力 Nominal molding power (MN)	0.20	0.40	0.60	1.2	1.8	4.8
热板规格Nominal molding power mm	400x200	400x400	400x600	400x1200	800x1100	1600x1500
热板单位面积压力 Plate pressure (Mpa)	2.5	2.5	2.5	2.5	2.0	2.0
主电机功率Main motor power (kw)	2.2	3	3	7.5	3	13
硫化带子内周长 inner length of vulcanization belt kw	960-3500	1680-3600	1680-3700	5000-17000		4700
外形尺寸Overall size (LxWxH)mm	3200x1050x1730	3200x1050x1730	3200x1050x1730	3200x1050x1730	2400x1100x2330	4000x1500x3060
产品重量Product weight kg	4000	4500	5000	8000	1400	2000

Conveyor Belt Press 输送带等大型硫化机

产品特点/Features

适用于硫化大型输送带，例如：尼龙输送带，普通输送带，防火输送带，钢丝绳输送带等。拥有高自动化和结构紧凑等特点。

conveyor belt vulcanizing machine:

Suitable to vulcanize giant conveyer belt such as nylon conveyer belt, common conveyer belt, anti-fire conveyer belt, wire rope conveyer belt etc. The line of Conveyor Belt vulcanizing presses are of high automation level and compact advanced structure.

Note: We can design and manufacture all kinds of non-standard Conveyor Belt.

设备零件图片



性能参数列表

产品型号	XLB-Q1200x2700x1	XLB-Q1300x4000x1	XLB-Q1400x8000x1	XLB-Q1600x8000x1	XLB-Q1400x10000x1
公称合模力 (MN) Nominal molding power	10.00	16.00	34.00	45.00	52.00
工作层数Working layer number	1	1	1	1	1
柱塞行程Piston stroke (mm)	300	300	400	500	300
热板单位面积压力 Plate pressure(Mpa)	3.0	3.08	3.10	3.40	3.0
主电机功率 Main motor power (kw)	5.5+5.5+7.5	5.5+5.5+7.5	37.5	49	52.5
热板间距 Plate clearance (mm)	250	300	200	250	250
外形尺寸(mm)	2700x1860x2600	3000x2100x3360	8000x2400x3800	2500x3100x8000	3520x2900x3550
重量Weight(kg)	26000	48000	121000	131000	150000



Sidewall Conveyor Belt Vulcanizing Press 挡边带硫化机

设备零部件图片



产品特点/Features

挡边带硫化机用于挡边带的制造成型，该主机操作方便、生产效率高。
公司可以根据客户的要求生产制造各种型号的挡边带生产设备。

Mainly used for sidewall conveyor belt, the host easy to operate, has high production efficiency. We can produce various types of equipment for side wall according to requirements.

性能参数列表

产品型号 Type	XLB-DQ1500×2100
合模力 Total pressure(Tons)	120
热板规格 Plate size(mm)	1500x2100x80
热板间距 Daylight(mm)	300
柱塞行程 Piston stroke (mm)	300
合模速度 Close mould speed(mm/s)	≥23
开模速度 Open mould speed (mm/s)	≥23
液压缸直径 Cylinder Diameter (mm)	∮285
液压缸数量 Cylinder Numbers	4
电机功率 Motor Power(kw)	5.5

Auto Push-out Mould press 自推模平板硫化机

产品特点/Features

1. XLB 自推模系列橡胶平板硫化机适用于各种橡胶模压制品的硫化成型，也可以用于其它热固类产品的压制成型。

2. 自动进出模及外顶出装置，劳动强度低

Machine features

1. XLB push model series rubber plate vulcanizing machine is suitable for all kinds of rubber vulcanization molding, molded products can also be used for other thermosetting products forming technology.

2. Automatic in and out of the mold and ejection device, low labor intensity

设备零部件图片



性能参数列表

型号 Model	XLB-500*500/100KN	XLB-600*550/200KN	XLB-500*500/100KN	XLB-500*500/100KN
最大宽度 Maximum width	500*500(mm)	650*550(mm)	800*640(mm)	640*700(mm)
最大行程 Maximum stroke	250 (mm)	350 (mm)	400 (mm)	400 (mm)
公称合模力 Total Pressure	100 (KN)	200 (KN)	250 (KN)	350 (KN)
电机功率 Motor power	3(KW)	5.5(KW)	5.5(KW)	7.5(KW)
外形尺寸 Overall size	1550*1550*1650 (mm)	1800*1800*1800 (mm)	2200*1100*2500 (mm)	1900*1900*2000 (mm)
重量 Weight	约2400 (kg)	约3500 (kg)	约5800 (kg)	约7600 (kg)

Vacuum Compression Molding Machine 真空热压成型机

产品特点/Features

XLB-V系列抽真空平板硫化机是一种较为先进的橡胶制品热压成型机，结构紧凑，适应性广，效率高，成品率高，尤其适合生产性状复杂，不易排气等成型难度较高的橡胶模型极品及使用易产生气泡的胶料的橡胶制品

Machine Features

XLB-V series vacuum vulcanizing machine is a kind of rubber molding machine, advanced compact structure, wide adaptability, high efficiency, high rate of finished products, especially suitable for the production of complex traits, not easy to use and the best model of rubber rubber exhaust molding difficult easy to produce gas glue bubbles.

设备零部件图片



性能参数列表

型号Model	XLB-V430*430/100KN	XLB-V540*540/200KN
最大宽度Max Width	420*420(MM)	540*540(MM)
最大行程Max Stroke	250(MM)	300(MM)
公称合模力Total Pressrue	1000(MN)	2000(MN)
电机功率Motor Power	4(KW)	5.5(KW)
外形尺寸Overall Size	1550*1550*1650(M)	1600*1800*2900(M)
重量Weight	约1900 (kg)	约4500 (kg)

Horizontal Rubber Injection Machine Series 卧式橡胶注射成型机

产品特点/Features

1. 特殊二段式设计，能使原料得到最佳排气效果，又不死料之功能。
2. 高精度德制电子尺准确计算射出量大小
3. 转射板特殊的座进，座退功能可使射嘴不死料，且清料容易，品质稳定
4. 备用日制安全电源，清除掌握机台情况
5. 全比例油路系统
6. 适合多边、多角及其他复杂成品，特别是运动用品、医疗用品、汽车用品、电子用品等精密性高产品应用。

Machine Features

1. Special 2-phase design. Can make the raw materials to get the best effect of exhaust, the function of the no die material.
2. System of high precision, electronic scale accurate calculation injection quantity size, Turn to shoot plate special into, function can make the nozzle back die material, removing mixture easy, stable quality.
3. Standby day security electronic eye, clearly grasp the machine status.
4. The proportional oil system.
5. Suitable for multilateral. Many angle and other complicated products, in particular, sports, supplies, medical supplies, automotive supplies, electronic products and other high precision product applications

设备零部件图片



性能参数列表

型号Model	HDS-200-3RT	HDS-300-3RT
最大宽度Maximum width	500*480(mm)	710*572(mm)
最大行程Maximum stroke	380(mm)	480(mm)
公称合模力Total Pressure	2000(MN)	3000(MN)
电机功率Motor Power	7.5(KW)	15(KW)
外形尺寸Overall Size	3000*1900*1800(m)	1550*1650*4100 (m)
重量Weight	约7000 (kg)	约8500 (kg)

Vertical rubber injection molding machine 立式橡胶注压成型机

产品特点/Features

1. 先锁紧模具，再用注压杆将料筒胶料打到模腔里，所得制品飞边少，几何尺寸准确，物理机械性能稳定
2. 配置自动移模与顶模功能，生产能方便轻松且不易损坏模具
3. 适合于带金属嵌件，形状复杂，投料困难的制品生产

Machine Features

1. First, lock the mold, and then the injection pressure bar will be expected to hit the barrel of the material into the mold cavity, the resulting product flying edge is small, the geometric size is accurate, the physical and mechanical properties are stable.
2. With the automatic transfer mode and the top die function, the production can be easily and easily damaged.
3. Suitable for production of products with metal insert, complicated shape and difficult to feed

设备零部件图片



性能参数列表

机型 Model	ZB1000KN	XZB2000KN	ZB3000KN
最大锁力(Kn) Max clamping force	1000	2000	3000
系统压力(Mpa) System pressure	20	20	20
压力(Mpa)Pressure	120	150	125
料向规格(mm2) Material size	Ø80X480X300	Ø90X490X350	Ø90X490X420
开模行程 Open mold stroke(mm2)	250-400可调	250-400可调	250-400可调
锁模速度(mm/s) Clamping speed	≥60	≥60	≥60
冷压行程(mm) Cold press stroke	300	350	420
顶模行程(翻板)(mm)Ejection mold stroke(reverse plate)	300	350	350
顶模力(翻板)(Kn) Ejection force(reverse plate)	80	80	80
中顶(Kn) Middle ejection force	63	63	60
热板尺寸(mm2)Plate size	500X500	550X600	600X700
热板功率Plate power	4.5kwX2	5.4kwX3	6kwX3
热板工作温度 Working temperature	≤250	≤250	≤250
电机功率(Kw)Motor power	4	4	4
重量(Kg) Weight	3500	4800	6500

Two-day-light tube curing press 内胎双层硫化机

产品特点/Features

用途

用于各种规格的力车，摩托车内胎硫化，除装胎，取胎由人工操作外，整个硫化周期的运转均采用自动化控制。

Application

For various bicycle, motorcycle tube curing, except man operated tube loading and removal, the entire curing process is automatically controlled.

结构特点

LLN-25/2 内胎双层液压硫化机根据内胎硫化的工艺特点，中下、热板，采用液压柱塞垂直升降，一个液压站控制六台双层内胎硫化机。提高合模（锁模）力，整机运行稳定可靠，噪音低，电器部分采用手动、联动二种方式，配用PLC控制系统，使操作简便，安全可靠。

Structure features

LLN-25/2 two-day-light hydraulic tube curing press is according to the technic characteristics of inner tube curing, takes hydraulic plunger vertically for the lower, hot plate, a hydraulic station can control six double inner tube curing machine. In order to increasing the clamping(clamping) force, getting stable and reliable machine operation with low noise, its electrical parts adopts two ways of manual and linkage, equipped with PLC control system, thus ensuring simple, and reliable operation.

设备零部件图片



性能参数列表

产品型号Product type	LLN-25/2
硫化内胎规格Vulcanized tube specifications	28"以下 (The following)
最大合模力Maximum clamping force(KN)	255
热板最大外径Maximum diameter of hot plate(mm)	760
适应模具高度Applicable mold height(mm)	70~120
热板开闭时间Hot plate opening and closing time(s)	4
电机功率Motor power(kw)	7.5
热板蒸汽压力Hot plate steam pressure(MPa)	0.8
内胎硫化内压Tube curing inner pressure(MPa)	0.8-1.0
外形尺寸 (长×宽×高) Dimension(L×W×H)(mm)	1280×900×1770
重量Weight(kg)	1600

Auto inner Tube Press Vulcanizer 全自动内胎硫化机

设备零部件图片



性能参数列表

技术参数/Technical data				
产品型号 Type	LLN-910	LLN-1200	LLN-1300	LLN-1430
公称合模力 (MN) Nominal molding	0.5	0.5	0.85	0.85
硫化模型最大直径 (mm) Tube head	900	1180	1285	1300
硫化模型最大高度 (mm) working layer number	315	375	430	450
主电机功率 (KW) Main motor power	4KW/960rpm	5.5KW/960rpm	5.5KW/960rpm	5.5KW/960rpm
蒸汽压力 (Mpa) steam pressure	0.7	0.7	0.7	0.7
空气压力 (Mpa) air pressure	0.6	0.6	0.6	0.6
内胎充气压力(Mpa)	0.7	0.7	0.7	0.7
启闭模型时间 (s)	5/5	5/5	各8	各9.65
外形尺寸(mm)	1800x1780x1500	2100x1980x1650	2510x2100x1980	2710x2210x2060

Hydraulic Tire Vulcanizer 液压轮胎硫化机

设备零部件图片



性能参数列表

技术参数/technical data				
产品型号 type	YL-600	YI-1000	YI-1200	YI-1400
工作层数 working layer number	2	2	2	2
蒸汽室内径(mm) steam chest inner dia.	820	830	840	1050
总压力 (KN) total pressure	600	1000	1200	1400
柱塞直径(mm) column dia.	250	300	360	360
高压压力(Mpa) high pressure	13	14	14	14
低压压力 (Mpa) low pressure	1.5	1.5	1.5	1.5
气囊内压 (Mpa) inner pressure of air bag	1.5	2.1	2.1	2.1
蒸汽工作压力(Mpa) steam working pressure	0.6-0.8	0.6-0.8	0.6-0.8	0.6-0.8
重量 (T) weight	3.2	4.5	5.5	8
外形尺寸 (mm) overall size	1200*900*2400	1200*842*2358	1200*900*2500	1360-1050*3820

Bike/electric vehicle tire building machine 自行车/电动车外胎成型机

产品特点/Features

该成型机主要用于自行车/电动车外胎成型，集贴帘布，上钢丝圈，帘布反包，上防擦布，贴胎面于一体成型胎壳质量好，操作简单，自动化程度高。

Application

This building machine is mainly used for bike/electric vehicle tire building, integrating ply applying, bead applying, cord turn up, chafer applying, and tread fixing, characterized by good forming quality, easy operation and high degree of automation.

设备零部件图片



性能参数列表

型号 Type	B/C-STB1620	B/C-STB2228
成型鼓型式Drum molding type	大中小鼓三段式Big, medium and drum three-stage type	大中小鼓三段式Big, medium and drum three-stage type
适用规格Applicable specification	16"~20"	22"~28"
成型鼓转速(转/分) Building drum speed(r/min)	40	40
供料架型式Servicer type	1层帘布+2条防擦布+1层胎面 2层帘布+2条防擦布+1层胎面 1 layer of cord+2 pcs chafer+1 layer tread 1 layer of cord+2 pcs chafer+1 layer tread	1层帘布+2条防擦布+1层胎面 1 layer of cord+2 pcs chafer+1 layer tread
帘布宽度Cord width(mm)	500	500
帘布圆直径 Cord circle diameter (mm)	Φ450	Φ450
衬布圆直径 Lining circle diameter (mm)	Φ250	Φ250
防擦布宽度 Chafing cloth width (mm)	7-22	7-22
胎面圆直径Tread circle diameter	700	700
胎面宽度Tread width (mm)	250	250
电机功率Motor power (kw)	2.2	2.2
外形尺寸(长×宽×高) Dimension(L×w×H) (mm)	2820×2200×2000	2820×2200×2000
重量 Weight (kg)	3300	3300

Rubber Belt Vulcanizing Joint Machine 胶带硫化接头机

产品特点/Features

ZLJ胶带硫化接头机，主要部件采用高强度铝合金制成。片式电热元件加温，具有工作平稳、热效率高，温度均匀，配有轻型全自动电控箱，压力系统供给0-2Mpa均匀压力，操作方便，搬运轻便，广泛应用于；冶金、矿山、水泥、电厂、港口、建材、化工等行业的各种运输胶带硫化接头及修复。

The main parts of vulcanization joint machine of DLQ system are made of high strength aluminum alloy. It warms up electric heating element, so it works stable with high thermal efficiency and homogeneous temperature. It equips with light automatic electric cabinet and has 0-2MPa even pressure offered by the pressure system, so it easily operates, portably carries. Now it has been widely used in the joint and patch of vulcanization machine in the field of metallurgy, mining, cement, electric power, wharf, building materials, chemical industry etc.

设备零部件图片



性能参数列表

序号NO.	规格SPEC	额定工作电压 Rating voltage	电源频率 Frequency	功率 power	适用胶带宽 Applied belt Width(mm)	度重量 weight
1	ZLJ-650	380V/660V	50HZ	8.7	650	480
2	ZLJ-800	380V/660V	50HZ	10.6	800	580
3	ZLJ-1000	380V/660V	50HZ	13.5	1000	750
4	ZLJ-1200	380V/660V	50HZ	15.4	1200	884
5	ZLJ-1400	380V/660V	50HZ	18.2	1400	957
6	ZLJ-1600	380V/660V	50HZ	20.1	1600	1202
7	ZLJ-1800	380V/660V	50HZ	22.1	1800	1347
8	ZLJ-2000	380V/660V	50HZ	24.1	2000	1845
9	ZLJ-2200	380V/660V	50HZ	27.1	2200	1546

Three-Roll Rubber Calender 三辊压延机

产品特点/Features

规格大；辊速快；半制品的精度高；机器的自动化水平高。

Features:
High specification; high speed of roller; high precision of half product; high level of automation of machine.

设备零部件图片



性能参数列表

型号 Model	XY-3R 230× 630	XY-3R 252× 720	XY-3R 360× 1120	XY-3R 400× 630	XY-3R 450× 1400	XY-3R 610× 1730	XY-3R 710× 1800	XY-3R 710× 2130	XY-3R 800× 2500	XY-3R 860× 2500
辊筒直径 Roll dia.	mm 230	252	360	400	450	610	710	710	800	860
辊筒工作长度 Roll working length	mm 630	720	1120	1200	1400	1730	1800	2130	2500	2500
辊筒速比 Roll ratio	1:1:1 1:1.2:1	1:1:1	1:1:1 0.733 :1.1	1:1:1 1:1.383 :1.383	1:1:1 1:1.5:1	1:1:1 1:1.4:1	0.5~1	1:1:1	0.5~1	0.5~1

性能参数列表

中辊筒线速度 Middle-roll linear speed	m/min	0.8-8	2-15.9	3-20	3-26.39	2.62-26.2	5.4-54	4-40	8-50	3-30	4-40
调距范围 Adjusting nip range	mm	0-7	0-10	0-10	0-10	0-10	0-20	0-30	0-20	0-30	0-30
制品最小厚度 Min. calendaring product thickness	mm	0.2	0.2	0.2	0.2	0.2	0.15	0.2	0.15	0.2	0.5
制品宽度 Calendaring product width	mm	500	550	920	1200	1250	1500	1600	1900	2200	2200
主电机功率 Motor power	kw	7.5	22	45	55	75	160	90kw×2, 110kw×1	185	132kw×3	132kw×3
外形尺寸 Overall size	L	mm 3168	3950	6500	6300	7320	7010	9950	7650	11400	12000
	W	mm 890	1720	1500	1500	2200	3950	3050	4560	3200	3200
	H	mm 1830	1210	2440	2440	2900	3730	4540	4080	5050	5100
重量 Weight	t	~3	~5.5	~14	~18	~21	~42	~90	~67	~110	~130



主要用于织物的贴胶、钢丝帘布的贴胶、胶料的压片、胶坯成型、贴隔层胶片及多层胶片贴合。
 Mainly used for stick rubber, steel wire tire cord fabric of rubber, rubber pelleting, rubber molding, isolation and multilayer film laminating film.

Four-Roll Rubber Calendar: 四辊压延机

产品特点/Features

- 1、设计结构简洁明快，操作方便。
- 2、有多种速度和速比可供选择，能满足广大用户不同配方、不同工艺的要求。
- 3、机架、底座全部采用焊接结构，经过退火除去应力处理，外形美观大方。
- 4、减速机为6级精度，硬齿面磨齿加工齿轮，使用寿命长，噪音低。
- 5、完善的紧急停车设置，能最大限度保证人员、设备的安全使用。
- 6、特殊设计密封结构，杜绝润滑油泄漏现象。
- 7、压延机均采用滚动轴承。
- 8、辊筒采用合金冷硬铸铁（LTG-H）制成，带有旋转接头，表面光洁度在Ra0.8上，可以带中高度。中空、钻孔辊筒可选择。
- 9、单出轴结构的速比齿轮采用人字齿，传动平稳，可以拔键调节速比。
- 10、具有各种挠度补偿措施供用户选择，中高度、反弯曲、轴交叉。
- 11、有不同层次的电控系统可供用户选择，总线控制系统。

Characteristic:

- 1, the design of the structure is simple and lively, easy to operate.
- 2, there are a variety of speed and speed ratio can be used to choose, to meet the vast number of users of different formulas, different process requirements.
- 3, the rack, the base of all the welded structure, after annealing to remove the stress treatment, the appearance is beautiful and generous.
- 4, the speed reducer is 6 grade precision, hard tooth surface gear, long service life, low noise.
- 5, improve the emergency stop settings, to maximize the safety of personnel, equipment, the use of.
- 6, special design seal structure, to prevent leakage of lubricating oil.
- 7, rolling machine rolling bearings are used.
- 8, the rolls are made of chilled cast iron alloy (LTG-H) made with rotary joints, surface finish in Ra0.8, can bring in height. Hollow roller, drilling can be selected.
- 9, single speed gear shaft structure with herringbone gear, smooth transmission, can pull key adjusting speed.
- 10, with a variety of deflection compensation measures for users to choose, in height, reverse bending, cross shaft.
- 11, different control systems are available for users to select, bus control system.

设备零部件图片



参数性能列表

型号Model	XY-4R 230×630	XY-4R 360×1120	XY-4R 400×1200	XY-4R 450×1400	XY-4R 610×1730	XY-4R 700×1850	XY-4R 710×2130	XY-4R 800×2500	XY-4R 860×2500	
辊筒直径 Roll dia.	mm 230	360	400	450	610	710	710	800	860	
辊筒工作长度 Roll working length	mm 630	1120	1200	1400	1730	1850	2130	2500	2500	
辊筒速比 Roll ratio	1:1:1:1	0.73:1; 1:0.73	1:1.383; 1.383:1	1:1.5; 1.5:1	1:1.4:1.4:1 1:1.4:1.4: 1.4	0.5-1	1:1.5: 1.5:1	0.5-1	0.5-1	
中辊筒线速度 Middle-roll linear speed	m/min 2.1-21	2-20.1	3-26.3	2.5-25	8-50	4-40	3-30	4-40	4-40	
调距范围 Adjusting nip range	mm 0-10	0-10	0-10	0-10	20	0-30	0-20	0-30	0-30	
制品最小厚度 Min. calendaring product thickness	mm 0.2	0.2	0.2	0.2	0.15	0.2	0.15	0.2	0.2	
制品宽度 Calendaring product width	mm 500	920	1200	1250	1500	1600	1900	2200	2200	
主电机功率 Motor power	kw 15	55	75	110	185	90kw× 2,110kw ×12	220	132kw×4	160kw×4	
外形尺寸 Overall size	L	mm 3800	3300	6400	6500	6580	9950	7010	10400	12000
	W	mm 930	940	1620	1970	2460	3600	4150	3900	3800
	H	mm 1890	2350	2490	2740	2920	4870	3730	5140	5850
重量Weight	t ~4.8	~16	~20	~23	~50	~110	~100	~130	~180	

Rubber conveyor belt calendaring line: 橡胶输送带压延线

产品特点/Features

1. 滚轮由冷硬铸铁合金制成，固体和耐磨，在轧辊上钻孔，具有加热和冷却效果。
2. 滚动轴承两端支撑滚轮，节省能源，减少偏心和振动，可保证产品精度。
3. 滚子具有轴向交叉和预弯曲装置，在由于负载的滚动变形的情况下，可以调节这两个装置来补偿。
4. 可以在单独的单侧或同时双侧实施修整。辊缝由位移传感器测量，然后在仪表上以数字显示操作表。
5. DC电机的驱动和直流调速装置的控制，使转速稳定可靠。

Characteristic:

1. Roll is made of chilled cast iron alloy, solid and wearable, drilled on roll circumference, having goof heating and cooling effects.
2. Rolling bearings support roll at two ends, saving energy and reducing eccentricity and vibration, can guarantee product accuracy.
3. Rolls have axis cross and pre-bending devices, in case of roll deformation due to loading, may regulate these two devices to compensate.
4. Nip adjustment can be implemented at separate one-side or simultaneous double-side. Roll gap is measured by displacement sensor, then displays in digital on the meter on operation table.
5. DC motor's drive and DC speed regulating device's control resulting in stable and reliable speed.

设备零件图片



这种带有压延设备以及辅机的生产线，是用于生产橡胶输送带的核心，双面涂布帆布，连续生产纯橡胶板，是生产输送带和橡胶条等的关键设备。

This production line, i.e. calendar equipped with accessories, is used for producing rubber conveyor belt's core, double-face coating of canvas, and continuous production of pure rubber sheet. It is key equipment for producing conveyor belt and rubber strip etc.

性能参数列表

parameters/model 型号	XYD-4S1730E2	XYD-4S1800A1	XY-4S2500A
Roll number 辊筒数量 pcs	4	4	4
结构	5	5	5
Structure type 结构类型	Drilled & smooth	Drilled & smooth	Drilled & smooth
Roll working diameter 辊筒工作直径(mm)	610	700	800
辊筒工作长度 Working length(mm)	1730	1800	2500
Roll linear speed 卷线速度 (m/min)	5--35	4--40	4--40
Speed ratio 辊筒速比	0.5--1	0.5--1	0.5--1
Roll camber	1#. 2#. 4#	1#. 2#. 4#	1#. 2#. 4#
Pre-loading	1#. 2#. 3#	1#. 2#. 3#	1#. 2#.
Axis cross	1#. 4#	1#. 4#	1#. 4#
Drive motor power 电机功率(kw)	90(1#)132(2#. 3#. 4#)	90(1#. 4#)110(2#. 3#.)	132x4
Calendered product 压延产品(mm)Max.width	1500	1600	2200
Min. thickness (mm)	0.2	0.2	0.2
Overall dimension(LxWxH)	8800x8960x4430	6000x4200x5020	10340x4200x4100
weight (t)	93	100	150

Conveyor Belt Constant Tension Forming Production Line 橡胶输送带恒张力成型线

产品特点/Features

- 1、外形结构设计新颖简洁实用，成型方式为双向往复成型，所有的成型操作均在同一平面上进行，充分体现人性化生产的特点。
- 2、生产线由PLC主控，采用矢量变频控制加智能张力导开相结合的技术，实现整个成型过程的智能化恒张力控制。
- 3、生产线采用EPC自动纠偏技术，反应灵敏，定位控制精准。

Product Features:

- 1, The structure has simple and practical design, forming two-way reciprocating molding, all the molding operations are carried out in the same plane, fully embodies the characteristics of human production.
- 2, The production line is controlled by the PLC master, the use of vector frequency control plus intelligent tension guided combination of technology to achieve the entire molding process of intelligent constant tension control.
- 3, The production line using EPC automatic deviation correction technology, responsive, precise positioning control.

设备零部件图片



性能参数列表

规格型号Model	成型速度 Molding Speed m/min	最大成型宽度Max molding width mm	单次贴合层数 Single fit layer	最大卷径Max diameter of roll mm	控制方式 Control manner
DCS-(1400~1800)	2.5~25	1800	3	3500	PLC+GOT
DCS-(2000~2400)	2.5~25	2400	3	3500	PLC+GOT
DCS-(2400~3200)	2.5~25	3200	3	3500	PLC+GOT

Hot Feed Rubber Extruder 热喂料挤出机

产品特点/Features

该机器主要用于基础半成品橡胶制品，例如内胎，胎面，轮带，橡胶管等。

The machine is used for extruding half-finished rubber products such as inner tube, tire tread, rim band, rubber tube, etc.

设备零部件图片



性能参数列表

Type and spec. 型号和规格	XJ-65	XJ-85	XJ-115	XJ-150	XJ-200	XJ-250
Screw dia. (mm) 螺杆直径	65	85	115	150	200	250
L/D长径比	4	4.8	4.8	4.4	4.4	4.5
Screw rotational speed(r/min) 螺杆转速	20.27 35.47	27.40 53.72	20~60	27~81	22.4~67.2	19.7~59.1
Motor power (kw) 电机功率	7.5	17	30	15.3~55	33.3~100	33.3~100
Overall dimension (L×W×H)(mm) 外形尺寸	1600×675×1053	2050×735×1275	2770×665×1300	3585×814×1470	4549×1140×1750	4950×1150×1483
Capacity (kg/h) 产量	50~80	62~270	100~350	800	1500~2200	3500
Total weight(t) 总重量	1.5	2.6	3.3	4.5	7.21	9

Pin-Barrel Cold Feed Rubber Extruder 销钉冷喂料挤出机

设备零部件图片



性能参数列表

Spec Item规格	GE90KS×14D	GE120KS×14D	GE150KS×16D	GE200KS×18D	GE200KS×18D	GE250KS×14D	
Screw dia 螺杆直径	mm 90	120	150	200	200	250	
L/D ratio 长径比	14:1	14:1	16:1	18:1	12:1	12:1	
Max.screw speed 最大螺杆 速度	r/min 60	55	44	33	26	22.63	
Hopper 料斗	mm 130×122	164×140	200×165	260×210	260×210	320×246	
Row qty of pin 销钉排数	8	10	10	12	10	10	
Pin qty of each row 每排 销钉数量	6	6	8	10	10	12	
Model of motor 电机型号	Z4-200-21	Z4-200-31	Z4-250-21	Z4-280-32	Z4-280-11	Z4-280-32	
Power 功率	kW 67	90	185	315	250	315	
Zone of hot water circulation 热 水循环区数量	4	4	4	4	3	4	
Hot water circulation heating power 循环热水加热功 率	kW 24	48	48	54	42	48	
Capacity 产量	kg/h 360	800-1000	1800-2000	2100-2600	2300	3000	
Overall dimen sions 外 形尺寸	L mm	2540	3996	6000	7770	6250	6885
	W mm	1493	1575	2600	3000	3000	2400
	H mm	1416	1760	1800	2035	2035	2090
About weight 重量	t ~4.5	~6	~7.25	~16.6	~12.6		

Double Screw Extruding Sheeter 双螺杆挤出压片机

产品特点/Features

1. 用于橡胶密炼机的下配套，将塑炼胶、母炼胶连续挤出与下片。
2. 能耗低、结构简单、自洁性好、使用寿命长、自动化程度高、操作简单、噪声低、无环境污染、占地面积小、维修方便等。

Main feature:

1. For the rubber mixer under the matching, the mixing, masterbatch continuous extrusion and film.
2. Low energy consumption, simple structure, self-cleaning, long service life, high degree of automation, simple operation, low noise, no environmental pollution, small footprint, easy maintenance.

设备零部件图片



Double Screw Extruding Sheeter 双螺杆挤出压片机

性能参数列表

型号Model	XJY-SZ620X250	XJY-SZ743×330	XJY-SZ936×416
螺杆形状 Shape of screw	变距变深锥型Variable pitch and depth, conical	变距变深锥型Variable pitch and depth, conical	变距变深锥型Variable pitch and depth, conical
螺杆数量 Quantity of screw pcs	2	2	2
螺杆中心线排列 Arrange of screw central-line	带角度With angle	带角度With angle	带角度With angle
螺杆直径 Diameter of screw mm	φ 602×φ 250	φ 743×φ 330	φ 936×φ 416
螺杆转速 Speed of screw r/min	2.2~22	2.2~22	2.2~22
挤出电机功率 Extruding motor power kW	90	160	220
压片辊尺寸 (D×L) Size of roll mm	φ 400×800	φ 450×1000	φ 508×1070
压片辊转速 Speed of sheeting roll r/min	2.5~25	3.2~32	3~30
辊筒工作调距间隙 Range of rolls nip adjusting mm	3~10	3~10	3~10
调距电机功率 Power of rolls adjusting motor kW	四级 4grade P=2 二级 2grade P=2.4	四级 4grade P=2 二级 2grade P=2.4	四级 4grade P=3.3 二级 2grade P=4
机头指胶板距离 Distance between guides mm	550	600 (650, 700, 750)	700 (750, 800, 850)
压片电机功率 Motor of roller-die kW	110	160	220
加料形式 Feeding method	自重Dead weight	自重Dead weight	自重Dead weight
加料口形状 Shape of feeding trough	梯形Trapezium	梯形Trapezium	梯形Trapezium
平均生产能力 Average Capacity t/h	7	9	11
冷却水耗量 Consumption of cooling water m ³ /h	~30	35~45	38~50
外形尺寸 Dimensions (L×W×H) mm	4570×4320×2720	4850×5300×2560	5460×5800×3400
约重 Gross Weight (excluding main motor) t	~25	~30	~44
配套密炼机型号 Matched internal mixer model	F160, GK160	F270, BB270, GK250, PN270	F370, BB370, GK400, PN420

Mat Production Line

输送带平板硫化生产线

产品特点/Features

- 1、生产线工艺流程设计先进、功能完善、操作简便。
- 2、主硫化采用计算机智能化辅助设计，整体结构稳固可靠。压力分布均匀，油缸及液压系统采用国际先进技术和配置，性能卓越。
- 3、新颖科学的热传导系统，确保了设备的温度控制精准，能耗低，热效率高。
- 4、电控系统采用集成式控制模式，自动化程度高

Product Features:

- 1, The production line process is design advanced, functional, and easy to operate.
- 2, The main curing using computer-aided design, the overall structure is stable and reliable. Pressure distribution, fuel tanks and hydraulic systems using international advanced technology and configuration, high performance.
- 3, The new scientific heat conduction system to ensure that the equipment temperature control precision, low energy consumption, high thermal efficiency.
- 4, The electronic control system using integrated control mode, a high degree of automation

设备零部件图片



性能参数列表

Type 型号	XLB-550*550	XLB-1100*1100
Total pressure 总压力	0.50MN	3.00MN
Plate size 热板尺寸	550x550x45mm	1100*1100
Plate clearance 热板间距	150mm	250mm
Working layer number 工作层数	4	2
Plate pressure 工作液压力	16.5Mpa	18.9Mpa
Piston stroke 柱塞行程	400mm	500mm
Heating 加热方式	electricity heating	electricity heating
Overall size 外形尺寸	1410x680x1600mm	2000x1900x2940mm
Weight 重量	3600kg	12500kg
Motor 电机功率	380V 50HZ	380V 50HZ
structure type 结构形式	column	Frame

Mixer 搅拌机

产品特点/Features

此M-100型混合机，用于在任何类型的工作地点混合，该机器配备有电动机减速器直接连接。它直接混合橡胶浆料。搅拌均匀，高效。将机器转移到场地非常方便，机器结构紧凑，易于操作，受到国内外客户的一致好评。

The M-100-Type mixing machine for mixing at any kinds of jobsites the machine equipped with a motor reducer direct connects. It mixes rubber slurry directly. Stirring uniform, high-efficiency. It is very convenient to transfer the machine to the venues, the structure of machine is compact and easy to operate by domestic and foreign customers praised and recognized.

Dual position cord tension unit and four station rubber sheet let off device.

设备零部件图片

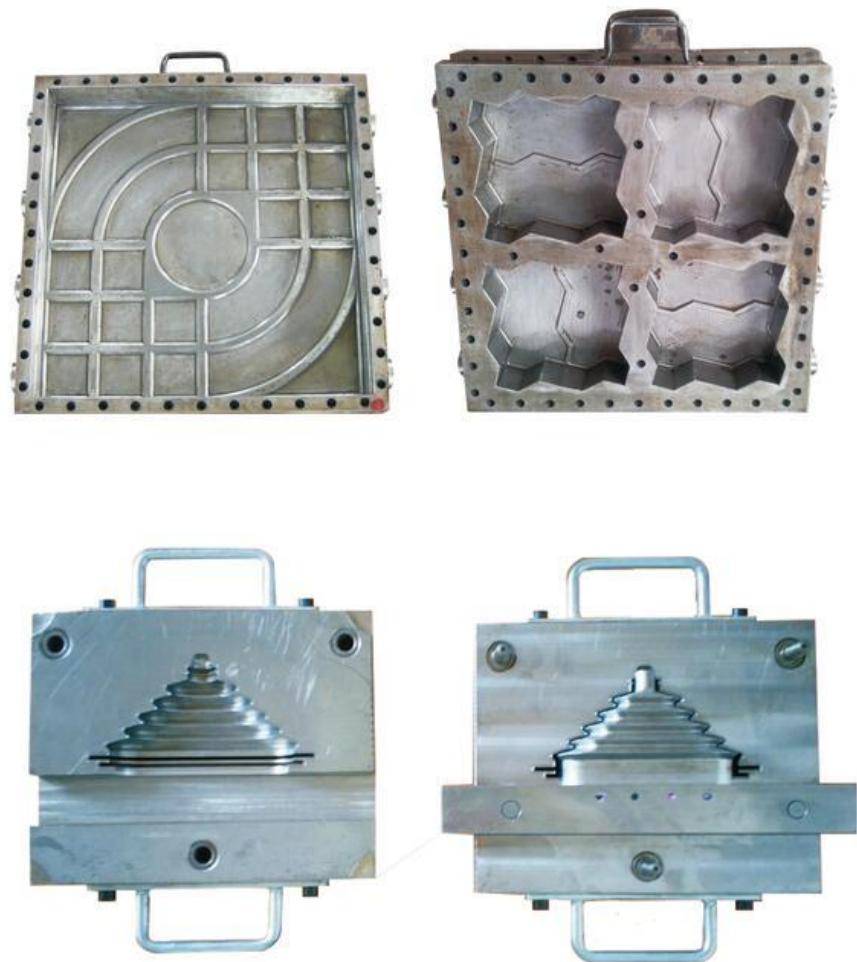


性能参数列表

volume for material 容量	300L
mixing performance 加料量	100KG
Power 电机功率	4KW
Machine weight 机器重量	160KG
Rotation speed of main shaft 主轴转速	72RPM
Appearance measurement 外形尺寸	1270x920x1270MM

Mold 模具

设备零部件图片



High-magnification plastic foaming molding machine

高倍率橡塑发泡成型机

产品特点/Features

1.使用范围广，适合各种高分子材料的发泡成型

It is suitable for different kinds of polymer material foaming.

2.设备设计标准，结构刚性强，满足高负荷生产

The machine is designed with strong structure to meet the foam production.

3.保压性能好，满足高性能产品的生产

It has a excellent pressure retain system to help the pressure stable during the production.

4.温度均匀，温差能控制在 ± 1 °C以内（温控系统由本公司提供时可以达到）

If user choose our temperature control system, tolerance of temperature can be controlled within ± 1 °C.

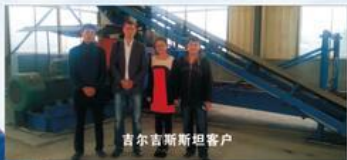
设备零部件图片



性能参数列表

设备型号 Machine model	合模力 Molding force (T)	热板规格 Plate size(mm)	原间距Daylight opening(mm)	层数 Layer	油缸直径Oil cylinder diameter(mm)	立柱开档Distance between columns (mm)	电机功率 Motor power (kw)	加热功率(万大卡) Heating power (Thousands of calories)
JHF-18	350	800*1100	150	4	480	1000	7.5	2.8
JHF-22	500	90*1200	150	4	560	1300	11	3.6
JHF-26	700	1100*1350	150	6	650	1400	11	7.5
JHF-30	900	1300*1500	150	6	762	1600	15	10
JHF-32	1000	1300*1600	150	6	813	1500	22	12
JHF-33	1100	1350*1700	170	6	838	1800	22	14
JHF-36	1350	1350*2000	180	6	915	1800	22	18
JHF-40	1650	1500*2200	200	6	1016	1800	30	

客户照片



客户照片

